

MICROLINKS TECHNOLOGY CO., LTD.

# Users Manual

---

## Installing PRO10 Device Operates Manual

MLTC

2010/06/20 Update Ver.2.2A

# Installing PRO10 Device Operates Manual

## Contents

<b>1. Please insert CD in CD player</b>	<b>3</b>
<b>2. Install PRO10 application program</b>	<b>4</b>
2.1 Start setup program	4
2.2 Welcome to use PRO10	4
2.4 Now installing program	5
2.5 Complete install	6
2.6 After installation complete	6
<b>3. Install PRO10 USB Driver</b>	<b>7</b>
3.1 Start to install driver program	7
3.2 Welcome to use SPMP3050 PC Device setup wizard	8
3.3 Now installing	9
3.4 install complete	10
3.5 After installation complete	10
<b>4. Uninstall PRO10 AP</b>	<b>11</b>
4.1 Choose PRO10 AP's Uninstall deriver as Fig. 4-1	11
4.2 Make sure if you proceed it as Fig. 4-2	11
4.3 In process of Uninstall Fig. 4-3	11
4.4 Finish Uninstall	12
<b>5. Uninstall PRO10 Driver</b>	<b>13</b>
5.1 Choose PRO10 Driver to uninstall as Fig.5-1	13
5.2 Fig. 5-2 in preparation	13
5.3 If you want to completely remove the driver, as Fig. 5-3	13
5.4 In process of uninstall	14
5.5 Finish uninstall PRO10 driver	14

## PRO10 Installing

The package provides setup CD. If CD is lost or damaged, please go download at <http://www.vitiny.com>. There are 3 ways to complete PRO10 Installment. Please follow the 3 steps to complete the installation.

- **Step 1:1. Please insert CD.**
- **Step 2:2. Install PRO10 application program.**
- **Step 3:3. Install PRO10 driver.**

There are 2 ways to complete PRO10 Uninstall. Please follow the 2 steps to complete the Uninstall.

- **Step 1: 4. Uninstall PRO10 AP.**
- **Step 2: 5. Uninstall PRO10 USB digital video driver.**

### 1. Please insert CD in CD player

Please insert the product CD in the player and the computer will read automatically. It will pop up a window shown below:



Fig.1-1 setup window

When the screen can't pop up this window, please go to CD-ROM to select Autorun.exe execute file, which the same will pop up as Fig.1-1 setup window. Autorun.exe is shown below:



Fig.1-2 execute icon

## 2. Install PRO10 application program

Please select the image 1-1 and setup application program button to install PRO10 program.

### 2.1 Start setup program

Click setup application program, after it will pop up (please select a language) window on Fig. 2-1, the initial language will follow up the pc OS system. If you want to cancel setup please click “Cancel” then click “OK”.

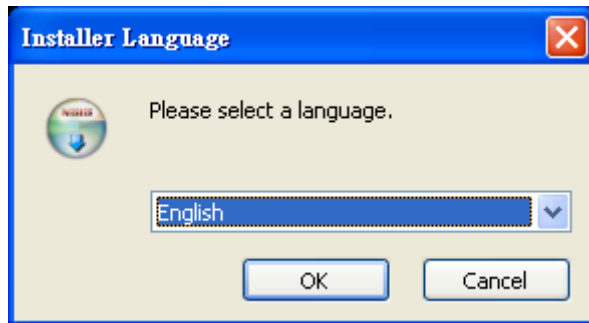


Fig. 2-1 setup language window

### 2.2 Welcome to use PRO10

After choosing the language, go to welcome to use PRO10 setup wizard window fig.2-2, then please click“Next”then continue. If want to cancel please click “Cancel” button.

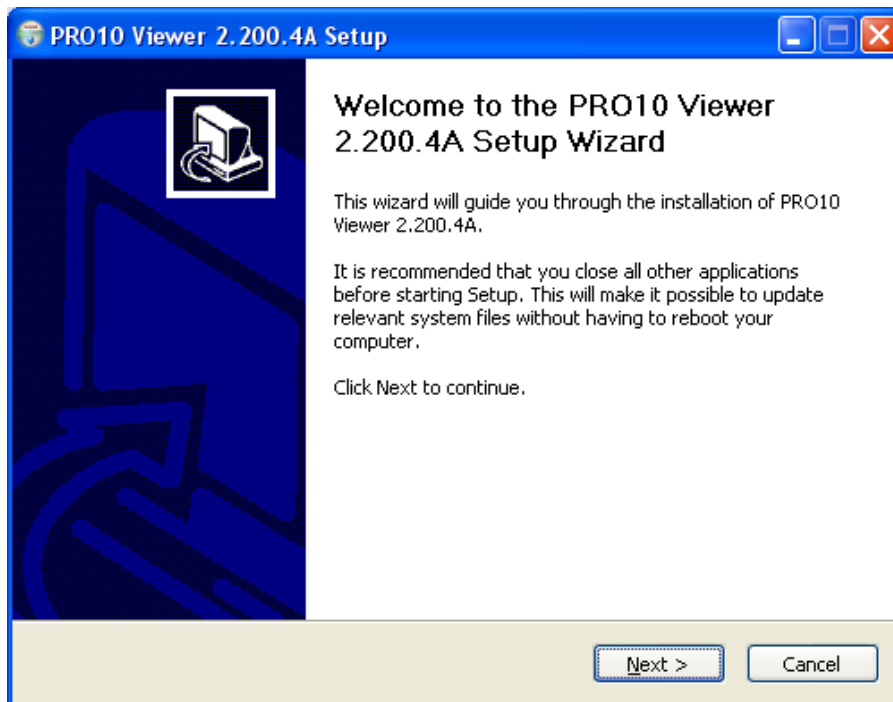


Fig. 2-2 welcome to use PRO10 setup wizard

### 2.3 Choose installation route

Next step enters choose of installation route window as Fig.2-3. If want to change file route click “Browse” to change setup path, then please click “install” then start installing.

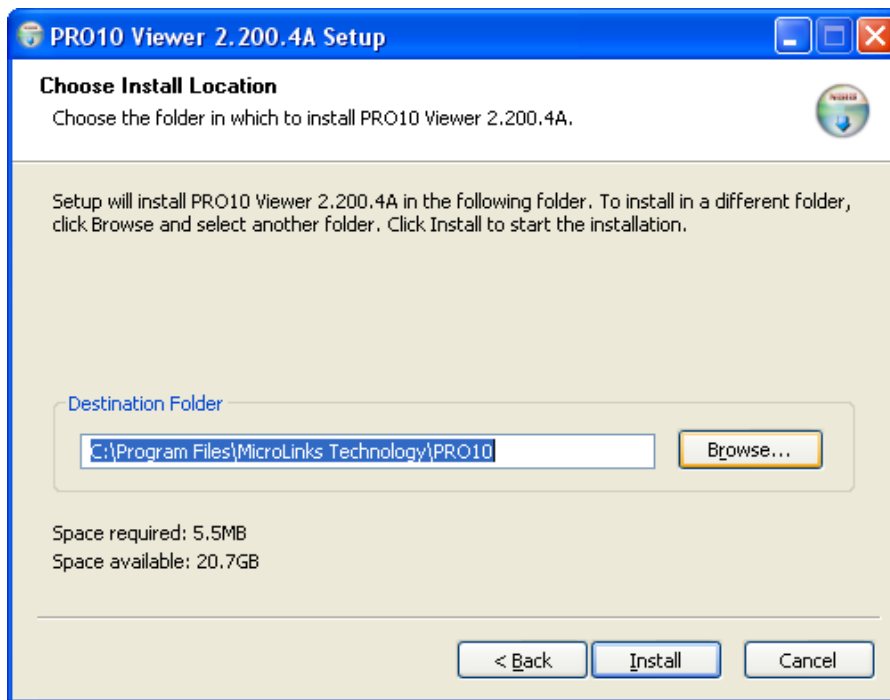


Fig. 2-3 choose installation route

### 2.4 Now installing program

Continue install wizard will start installing program as directory fig.2-3.

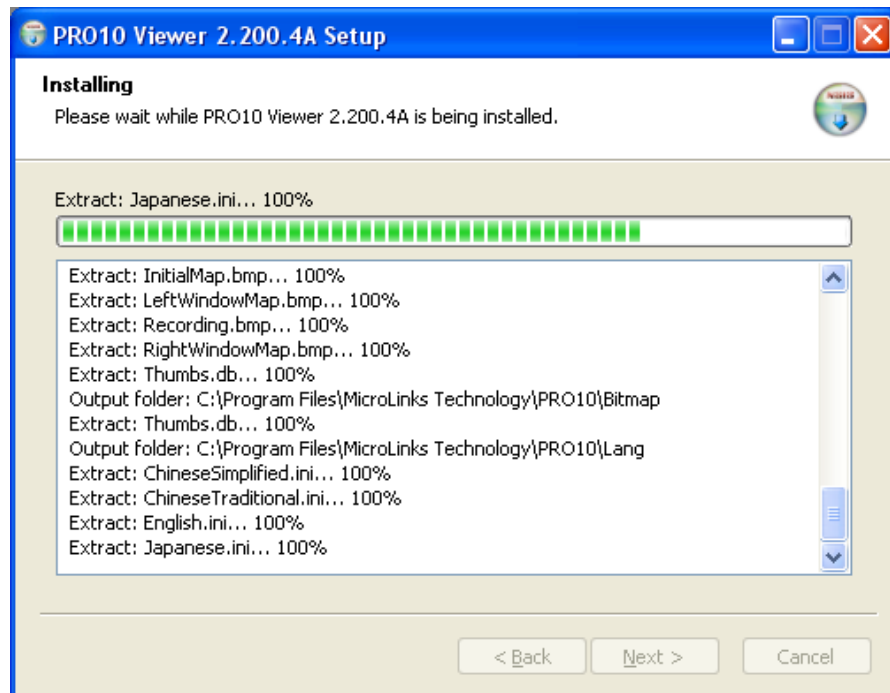


Fig.2-4 now installing

## 2.5 Complete install

When the PRO10 program complete installation (Fig.2-5). Please click “Finish”.

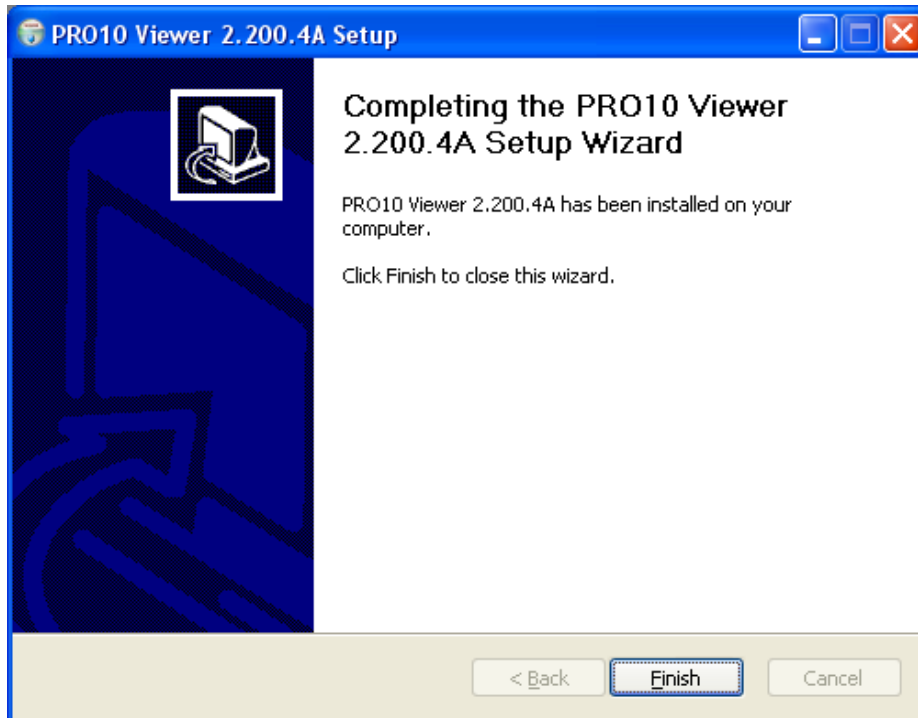


Fig.2-5 PRO10 wizard install complete

## 2.6 After installation complete

Desktop will show PRO10 short cut as Fig.2-6.



Fig.2-6 PRO10 short cut

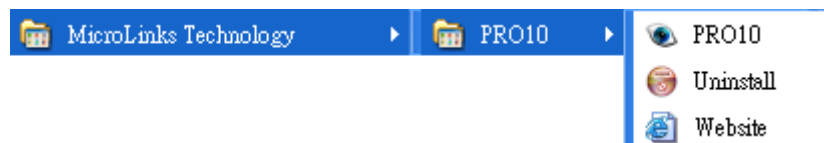


Fig. 2-7 PRO10 at position all programs

### 3. Install PRO10 USB Driver

The driver is must, if you not install it, you can't use PRO10 AP.

#### 3.1 Start to install driver program

Please select Fig.1-1 to start Installing PRO10 drive. After click setup PRO10 driver button, it will pop up Fig.3-1, now be ready to install the window. If cancel installation, please click “cancel” button.

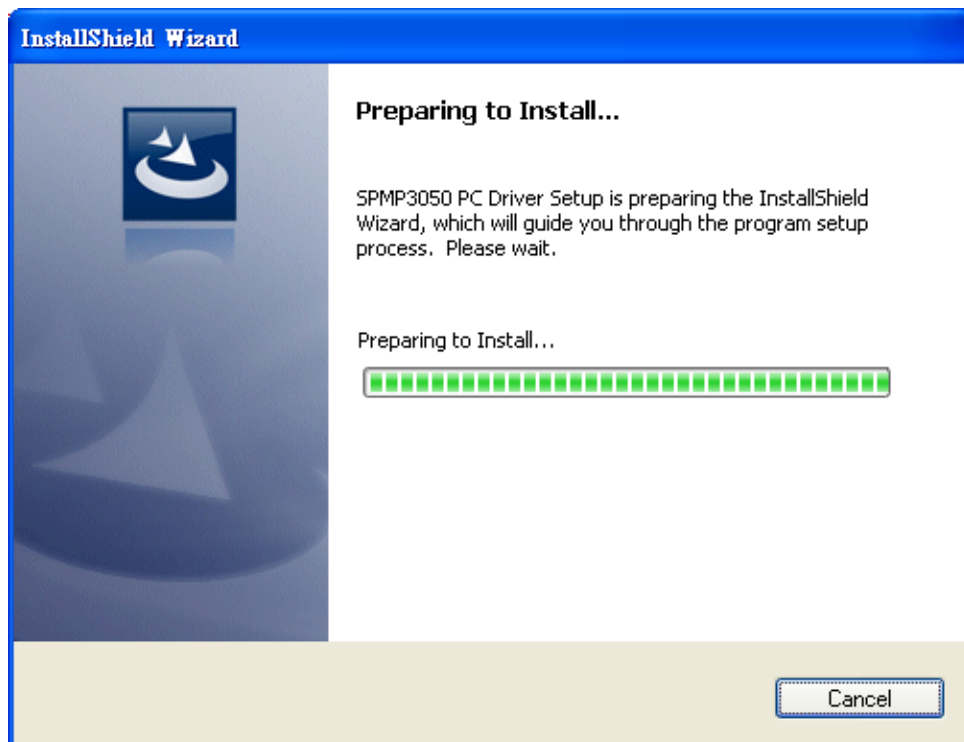


Fig.3-1 Getting ready to install

### 3.2 Welcome to use SPMP3050 PC Device setup wizard

Preparing to install, please follow under setups.

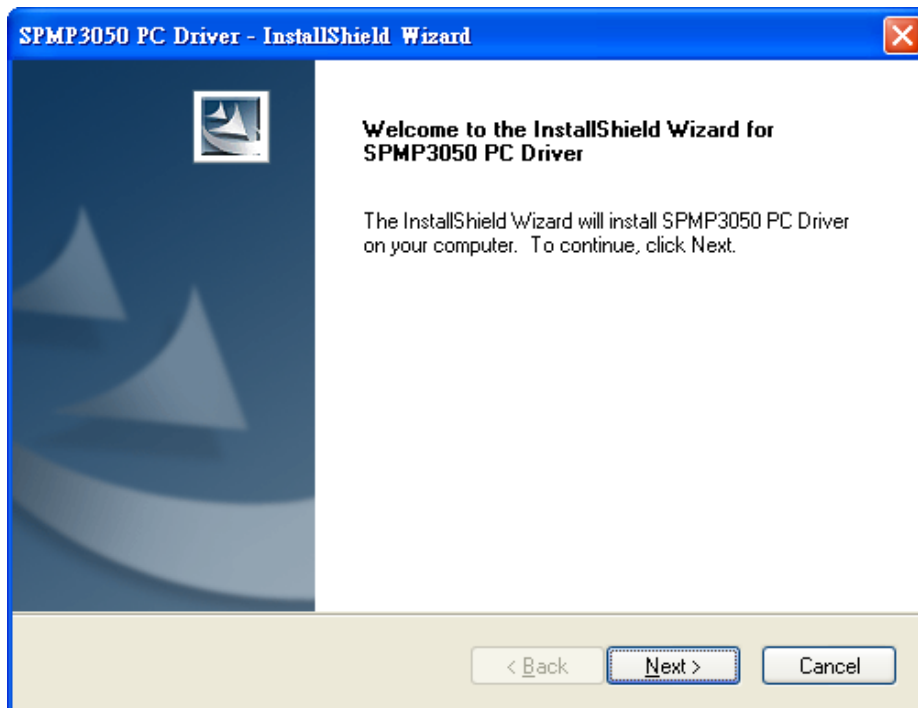


Fig.3-2 welcome to use SPMP3050 PC device install wizard.

Please choose complete option and click “Next” button. If user wants to change install path, please choose custom option.

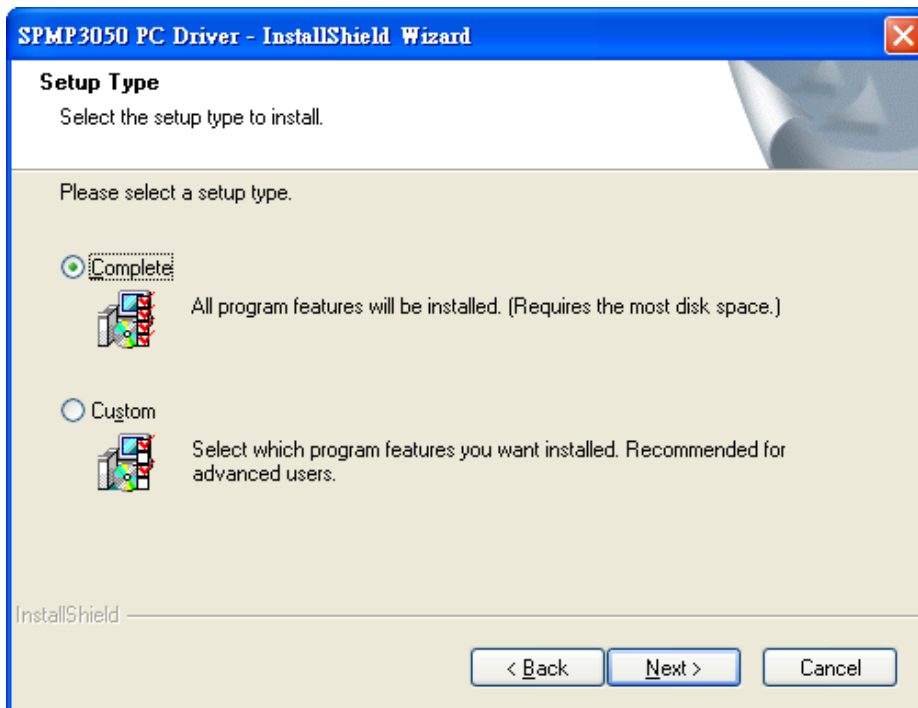


Fig.3-3 Select the setup type to install



Before Preparing start copying files, if you want to change or review any settings, click “Back”. If install settings were confirmed, click “Next” to begin copying files.

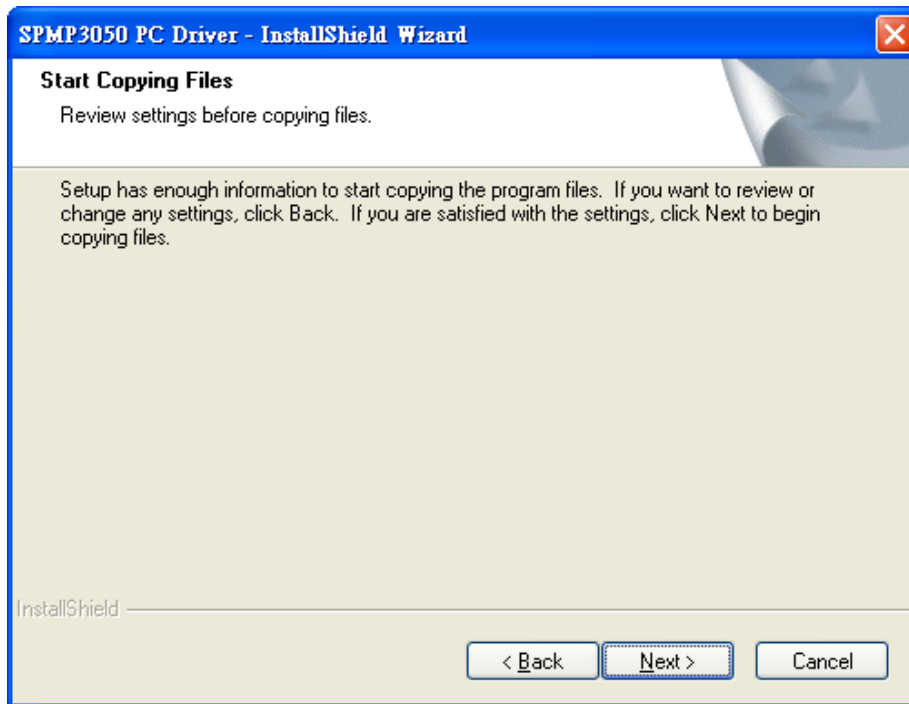


Fig.3-4 Review settings before copying files

### 3.3 Now installing

If you want to stop installation, please click “Cancel”.

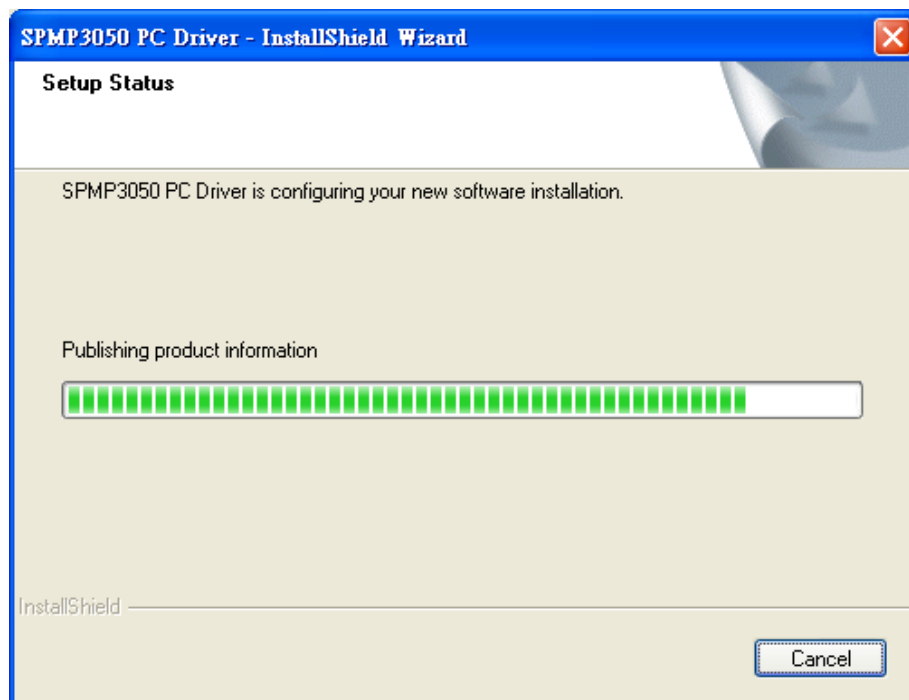


Fig.3-5 Now installing SPMP3050 PC Device

### 3.4 install complete

Complete SPMP3050 PC device setup (Fig. 3-5), click “finish” and then driver program is completed.

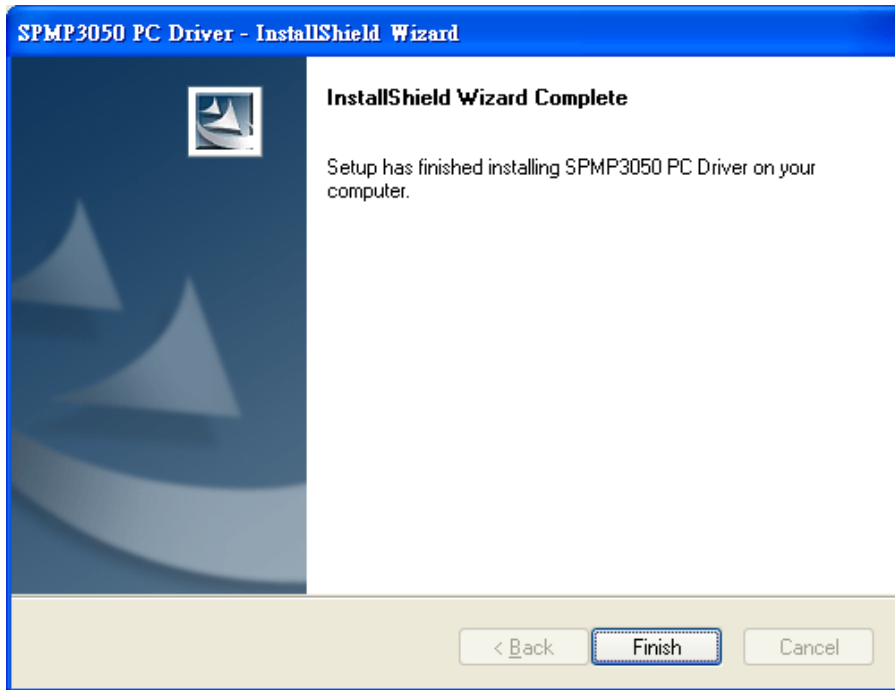


Fig. 3-6 SPMP3050 PC device installations complete

### 3.5 After installation complete

After installation is completed, click Start -> all programs will also have SPMP3050 PC device file shown Fig.3-7.



Fig.3-7 SPMP3050 PC device is at all programs position.

PRO10 can be executed from ICON AMCap as below Fig. 3-6. However, AMCap is a simple tool for preview only and can't support image process as the PRO10 AP.

## 4. Uninstall PRO10 AP

4.1 Choose PRO10 AP's Uninstall driver as Fig. 4-1

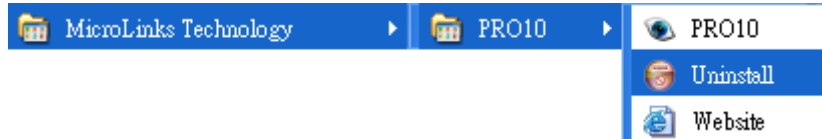


Fig. 4-1 PRO10 AP Uninstall

4.2 Make sure if you proceed it as Fig. 4-2

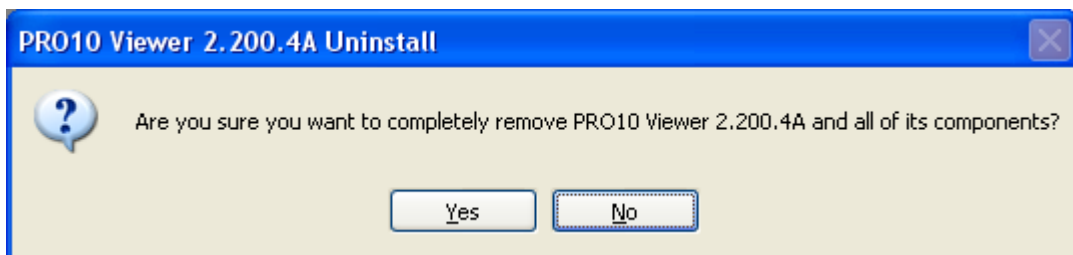


Fig. 4-2

4.3 In process of Uninstall Fig. 4-3

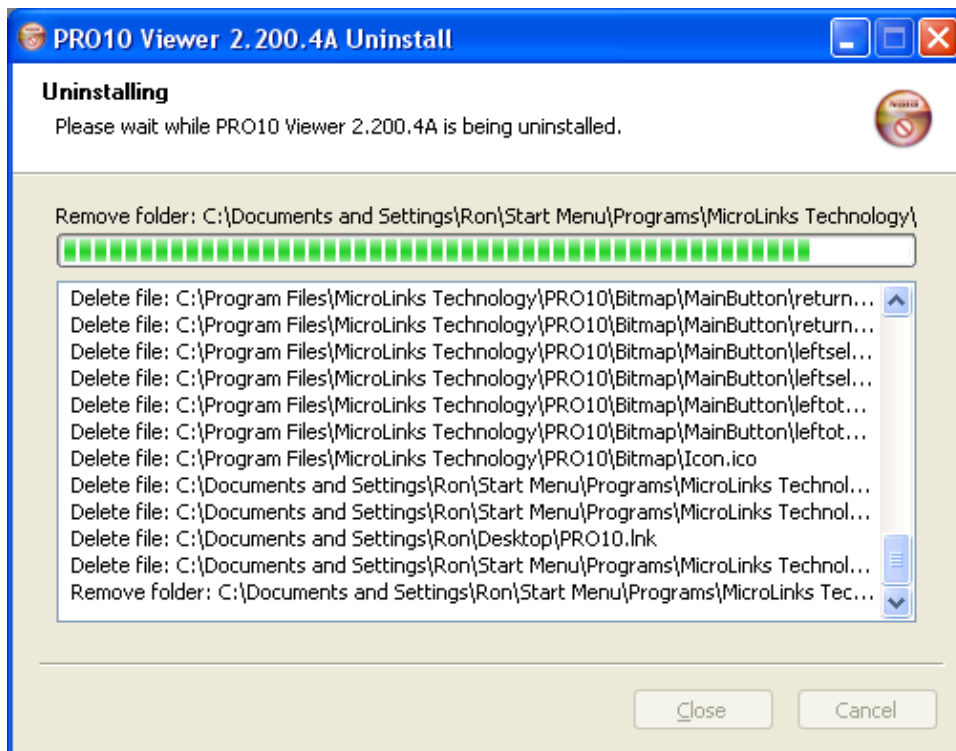


Fig.4-3 in process

#### 4.4 Finish Uninstall



Fig. 4-4 Finish Uninstall

## 5. Uninstall PRO10 Driver

5.1 Choose PRO10 Driver to uninstall as Fig.5-1



Fig. 5-1 Uninstall PRO10 USB Driver

5.2 Fig. 5-2 in preparation

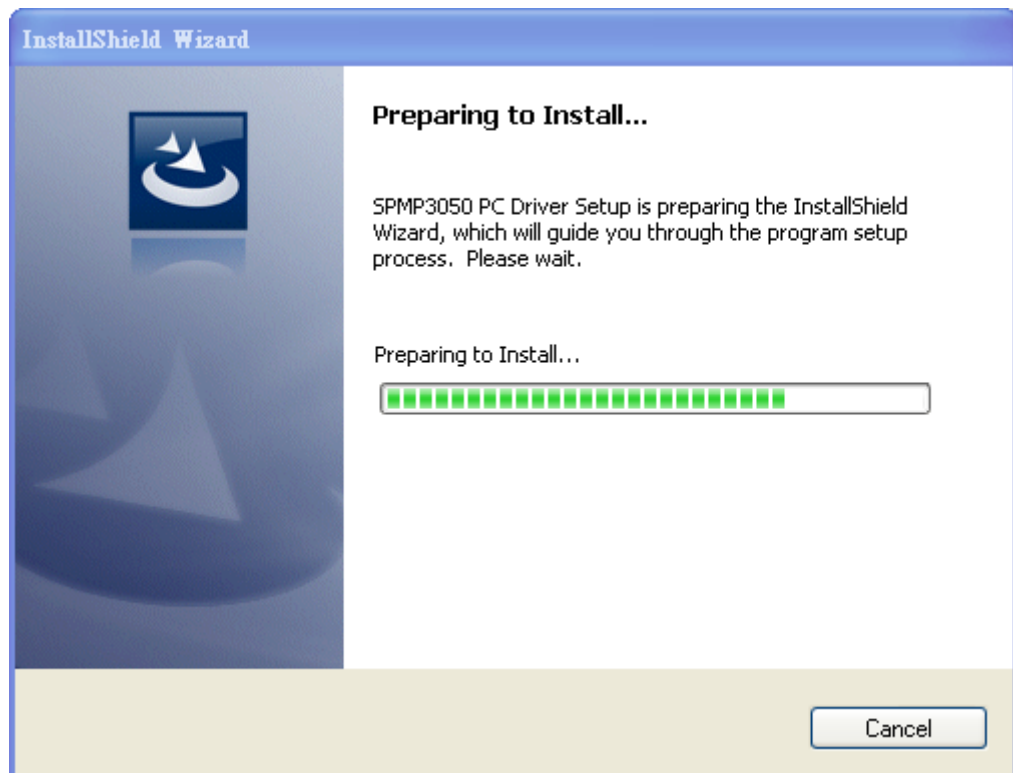


Fig. 5-2 preparation

5.3 If you want to completely remove the driver, as Fig. 5-3.

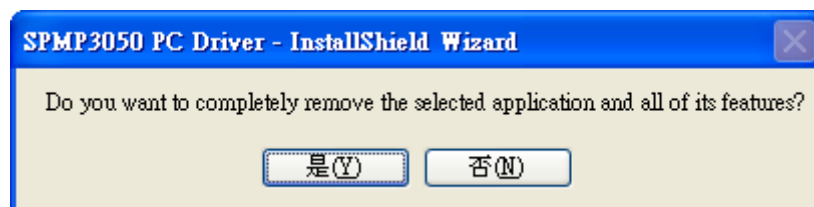


Fig. 5-3

### 5.4 In process of uninstall

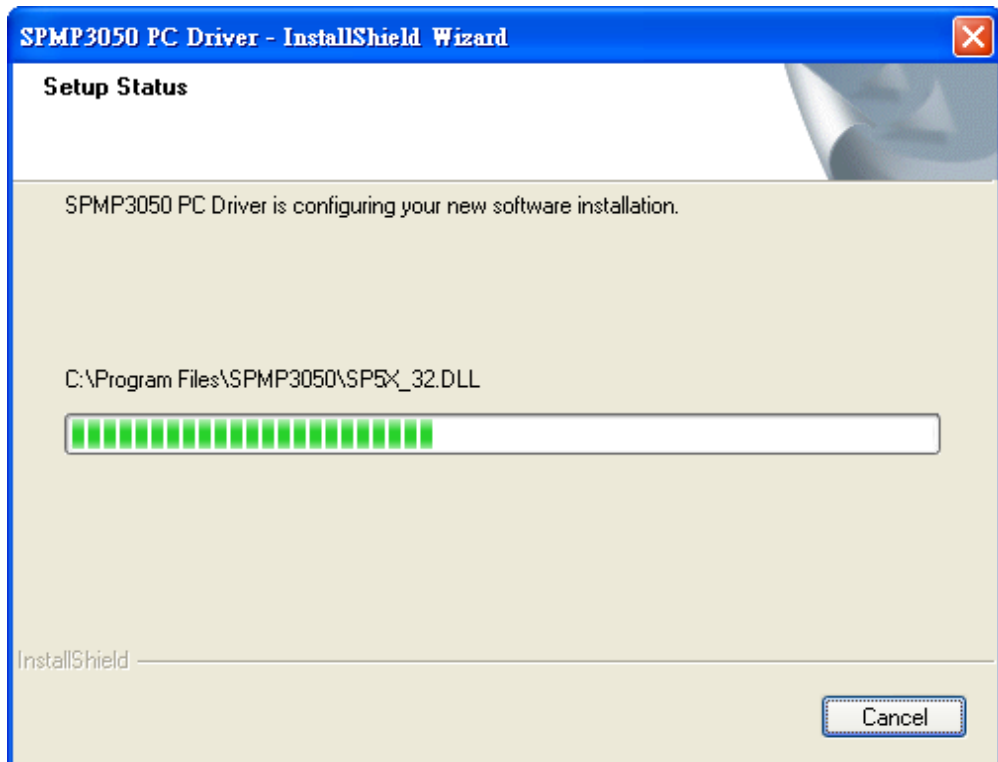


Fig.5-4 in process of uninstall

### 5.5 Finish uninstall PRO10 driver.

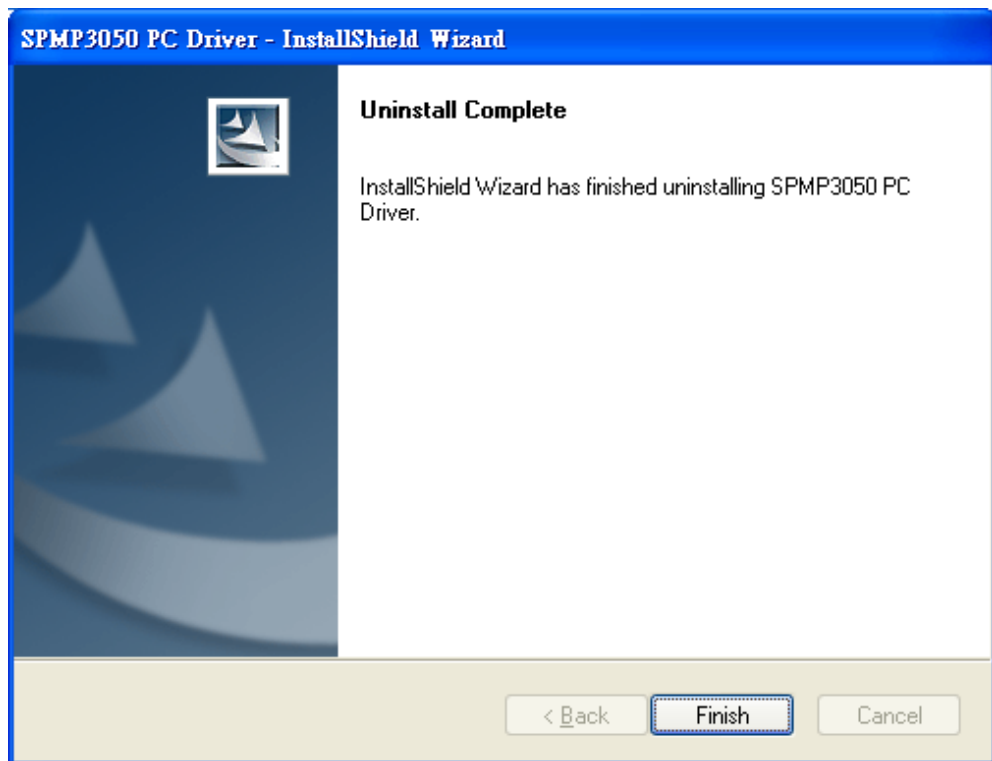


Fig.5-5 Finish uninstall